

HT Chassis® (20)

HT Chassis® (40/43/45)

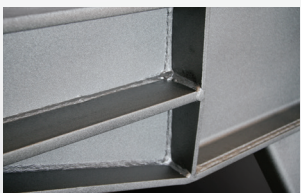
HT Chassis®



Air and electrical lines protected with Automotive Wire Loom for optimal wire protection



All fabricated steel parts are shot blasted, prime coated before and after fabrication and welding then followed with a zinc rich epoxy primer

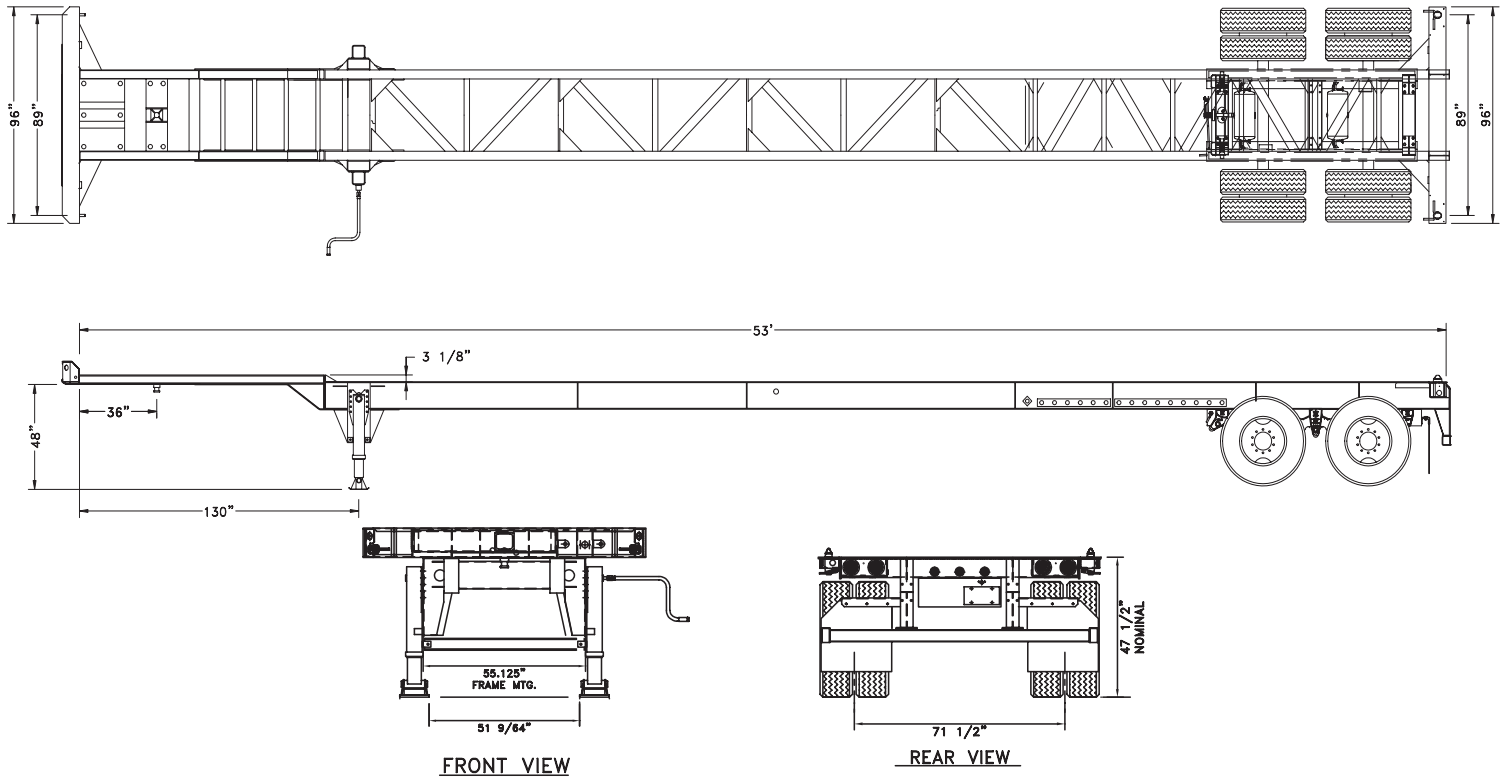


To ensure quality workmanship, all Hyundai Translead welders are ASW qualified

FEATURES & BENEFITS

- The largest container chassis supplier in North America, capable of producing over 1,000 chassis per month
- High-strength steel construction for extra strength and durability
- State-of-the-art manufacturing facility with top-notch surface preparation, advanced corrosion protective coating application and highly automated running gear assembly processes
- Industry experienced team of engineers is equipped with the latest computer aided technology to bring production design, control, and manufacturing all together to enhance the field of factory automation for enhanced cost competitiveness
- Re-manufacturing program is available to extend the service life and to reduce life-cycle costs of chassis

Hyundai Translead's state-of-the-art chassis manufacturing facility produces a wide variety of sizes (20', 40', 45', 48', and 53'), designs, and specifications, including fixed, sliding, air ride suspension and multiple axle chassis.



STANDARD FEATURES

- Heavy duty construction
- All steel parts are shot blasted, primer coated before and after fabrication with zinc rich primer
- Heavy duty diagonal bracing in center and suspension areas
- Sealed wiring harness with integral ground
- A.A.R. Certified
- 3 - 1/8" gooseneck height

SPECIFICATIONS

GENERAL		Landing Gear	50,000 lb. capacity with heavy-duty low profile sand shoe.
Overall Length	53' 8"	Rear Impact Guard	4" square horizontal tube designed and tested to conform to federal motor vehicle safety standards in effect at time of production.
Overall Width	96"	Suspension	Slider suspension with 2 pin locking mechanism, two leaf springs. Location variable in 6" increments.
King Pin Setting	36"	Wheel & Drums	Heavy duty, 16-5/16" x 7" outboard mounted brake drums with 8.25" x 22.5" hub piloted disc wheels.
Capacity	67,200 LBS	Tires	11" x 22.5", radial.
Main Beam	Hi-tensile steel, hot rolled 12" x 14 lb/ft H-beam	Axles	5" round, 22,500 lb. rating, 71 - 1/2" track, 16-1/2" X 7" with non-asbestos lining.
Gooseneck	4" deep fabricated H-beam type, 1/2" thick x 4" wide top and bottom flange	Brakes	2S-1M ABS Brake system. Meets FMVSS 121
Crossmember	Fabricated channel type with diagonal braces throughout rear bolster to gooseneck section	Lights & Wiring	12 volt sealed system with molded connectors to accept sealed lamps.
Upper Coupler	All hi-tensile steel construction with A.A.R. Certified cruciform style king pin. All interior walls of closed sections are coated for superior corrosion protection.	Paint	All steel parts are shot blasted, coated with zinc rich primer and finished with urethane top coat.
Front Bolster	8" wide x 10" deep, open section with full width container guide feature made from hi-tensile steel with two horizontal locking pin assemblies.	Markings	Customer markings installed. Conspicuity marking per latest Federal Safety Standards.
Rear Bolster	8" wide thick top plate with "U" type channel section made from hi-tensile steel with two nonretractable twist lock assemblies.		

All dimensions are nominal.
Consult factory for special options available.
Specifications subject to change without notice.



NEW THINKING.
NEW POSSIBILITIES.

A subsidiary of Hyundai Motors
800-251-0871 · Fax 619-542-0301 www.translead.com